

JAPAN EARTHQUAKE REINSURANCE CO., LTD.

PROFILE

In accordance with the introduction of the Law concerning Earthquake Insurance (Law No. 73, May 18, 1966) and following the launch of sales of earthquake insurance on dwelling risks to be written in conjunction with dwelling and shop-owners comprehensive insurance policies, JER was established with share capital of 1 billion yen by 20 domestic Japanese non-life insurance companies on May 30, 1966. The Company was licensed for the earthquake insurance business and started its operation on June 1, 1966.

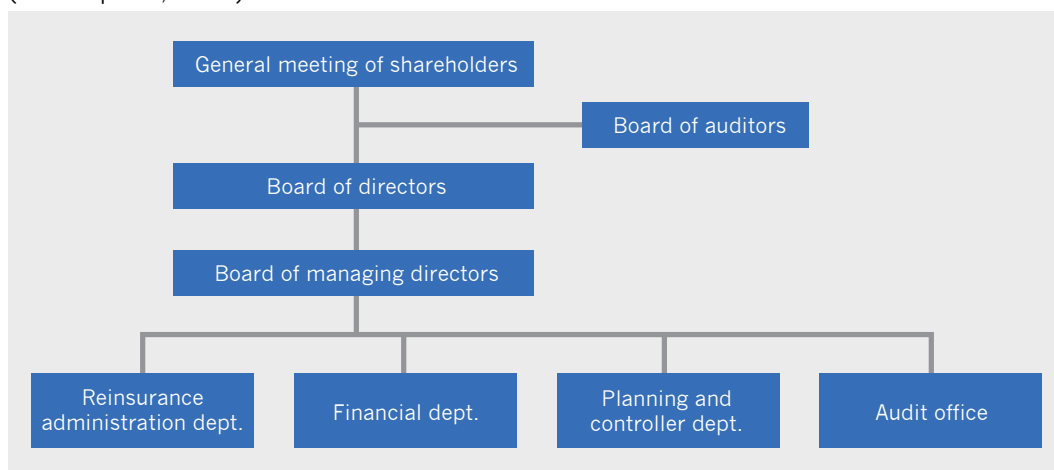
Earthquake insurance on dwelling risks depends on this reinsurance system (which is a safety net, as it were), in which the government, non-life insurance companies and JER participate to ensure that insurance claims can be paid to policyholders without fail.

The insurance premiums paid by policyholders are separated from non-life insurance companies, and are managed and operated by the government and JER.

JER is thus at the center of a reinsurance system, and undertakes reinsurance procedures with the government and non-life insurance companies, while managing and operating the insurance premiums paid by policyholders as the sole earthquake reinsurance company in Japan.

ORGANIZATION

(As of April 1, 2020)



SHAREHOLDERS

(As of March 31, 2020)

Shareholder	No. of shares owned (1,000 shares)	Percentage of shares owned (%)
Tokio Marine & Nichido Fire Insurance Co., Ltd.	537	26.9
Sompo Japan Insurance Inc.	529	26.5
Mitsui Sumitomo Insurance Co., Ltd.	338	16.9
Aioi Nissay Dowa Insurance Co., Ltd.	255	12.8
AIG General Insurance Company, Ltd.	123	6.2
The Toa Reinsurance Co., Ltd.	93	4.7
Nisshin Fire & Marine Insurance Co., Ltd.	61	3.1
The Kyoei Fire & Marine Insurance Co., Ltd.	34	1.7
Rakuten General Insurance Co., Ltd.	8	0.4
SECOM General Insurance Co., Ltd.	7	0.4

BOARD MEMBERS (FULL-TIME)

(As of July 1, 2020)

Post	Name
Chairman (representative director)	Yoshihiko Murase
President (representative director)	Shoji Ito
Managing director (representative director)	Motomi Ikeda
Managing director (representative director)	Hiroyuki Hata
Corporate auditor	Tsuyoshi Suzuki